

CENTRAL LOCALITY PLAN 2022

Introduction

Doncaster is a “place of places” with diverse communities, different strengths and equally variable needs. The locality approach is a way in which Doncaster Council and partners can get closer to communities to understand these strengths and different needs. By hearing from them what it is like to live in different neighbourhoods across the borough, we will be able to shape our services, strategies and investment to better reflect these differences.

At the core of this approach is the commitment to hear the voices of local people, to understand the strengths in our neighbourhoods and build capacity in communities so that they can take control of their own destiny. No one person or place should be left behind.

There are four strands to the locality approach:

- We must engage with and empower local communities, understanding their strengths and supporting them on their own terms. We call this “Asset Based Community Development”.
- We must coordinate our services, and our partners on each locality footprint, especially ensuring that people, families and communities with the most needs receive a joined up response. We call this “Local Solutions”.
- We must attract investment into our Localities and make best use of our existing resources, so that funding supports the changes that local people want to see on the issues where need is greatest. “Locality Commissioning”.
- We must tie the above actions together so that there is a local deal for each of our communities that reflects their needs and aspirations. This will be done by developing a series of “Locality Plans”.

This is the first version of the Central Locality Plan.

What is a Locality Plan?

Locality plans will look at how we can work together to strengthen communities and improve the lives and opportunities for the residents living there. A locality plan needs to be ever-changing in line with the needs of the community. In 2019, we could never have predicted the impact a global pandemic could have had on residents of Doncaster, so it is important that these plans remain agile and cognisant of the different situations and external factors that are impacting on communities.

The first iteration of this Central Locality Plan will look to:

- Define the priorities for improving the area over the next year
- Showcase how resources will be deployed at a local level to support and facilitate real change within communities
- Truly understand the different communities that make up the Central Locality
- Provide a steer on how we will implement the wider strategies at a community level

In bringing this plan together we have asked, and will continue to ask, local people across Doncaster what would make the area better. The following pages highlight what is good about our local communities and what you would like to see improve.

What is the Central Locality?

For the purpose of delivering the locality approach, Doncaster has been split into four localities, each consisting of a number of different communities. The 'Central' locality includes the following wards:

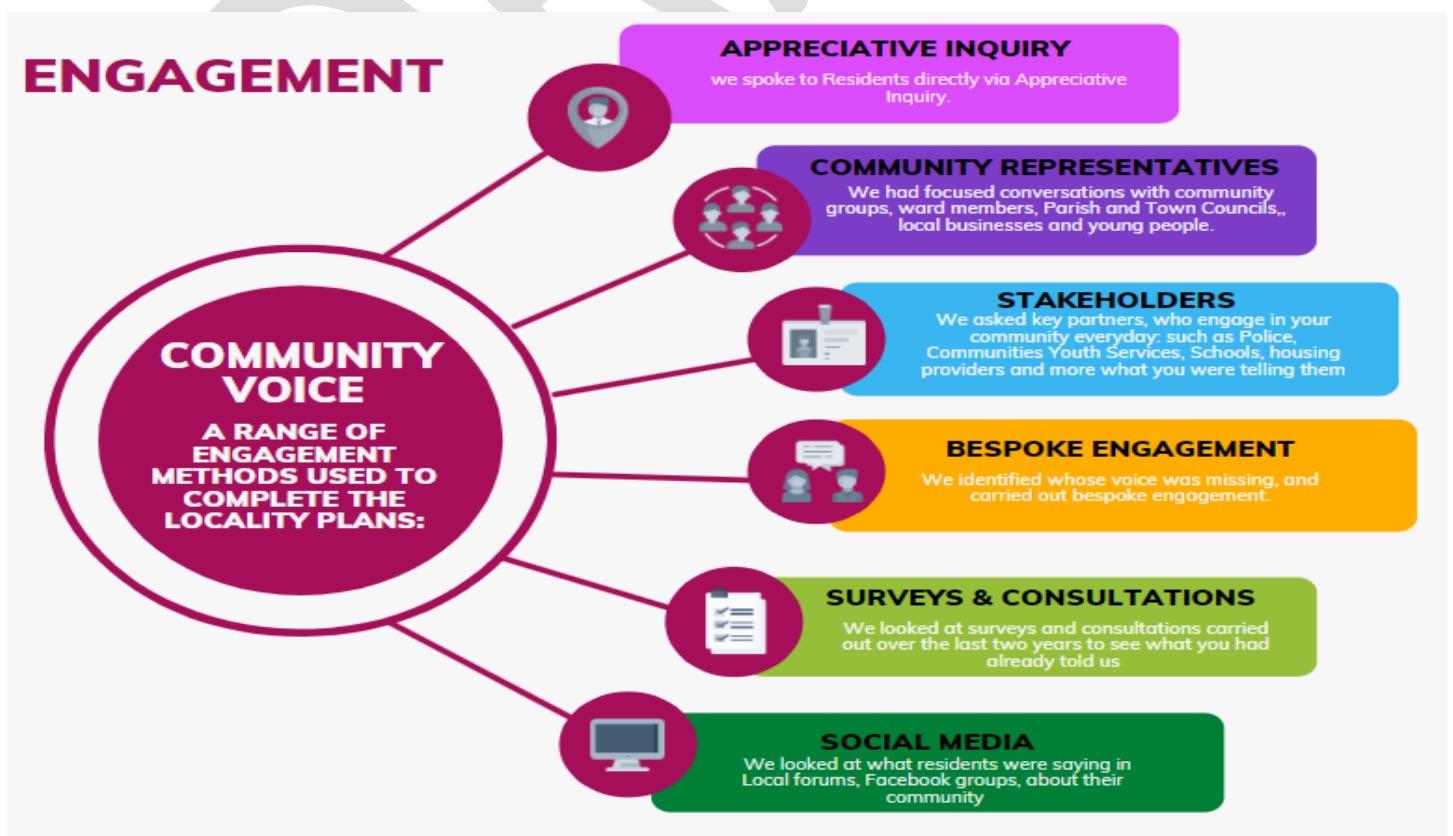
- **Hexthorpe and Balby North**
- **Balby South**
- **Wheatley Hills and Intake**
- **Bessacarr and Cantley**
- **Town ward**

Although each of the above wards are grouped under the Central locality, they will all also be considered and supported for the unique communities they are. The Central Locality is located in the centre of the Borough, with the wards surrounding the Town Centre. It is very diverse, with a mix of black and minority ethnic communities in some areas. Central is home to many of Doncaster's physical assets, the Racecourse, Keepmoat Stadium, Doncaster Minster, The Hub College, UTC, CAST, Danum Gallery, The Dome, Library & Museum, Castle Park and the Mansion House to name a few.

It has great transport links with the national motorway infrastructure (M18, A1), the Interchange and newly restored Train Station, coupled with a range of cycle paths and walking routes for all ages. Central has many retail parks and centres; Frenchgate Centre, Wheatley Hall Road and Lakeside shopping centres, as well as, Doncaster Market and a variety of local High Streets in each community. One of Central's major assets are its array of green spaces, which include Westfield Park, Elmfield Park, Hexthorpe Park, Sandall Park, Grove Park, Townfields and Sandall Beat. Additionally, there are also several golf courses to support recreational activity these include Town Moor, Doncaster and Wheatley Golf Clubs.

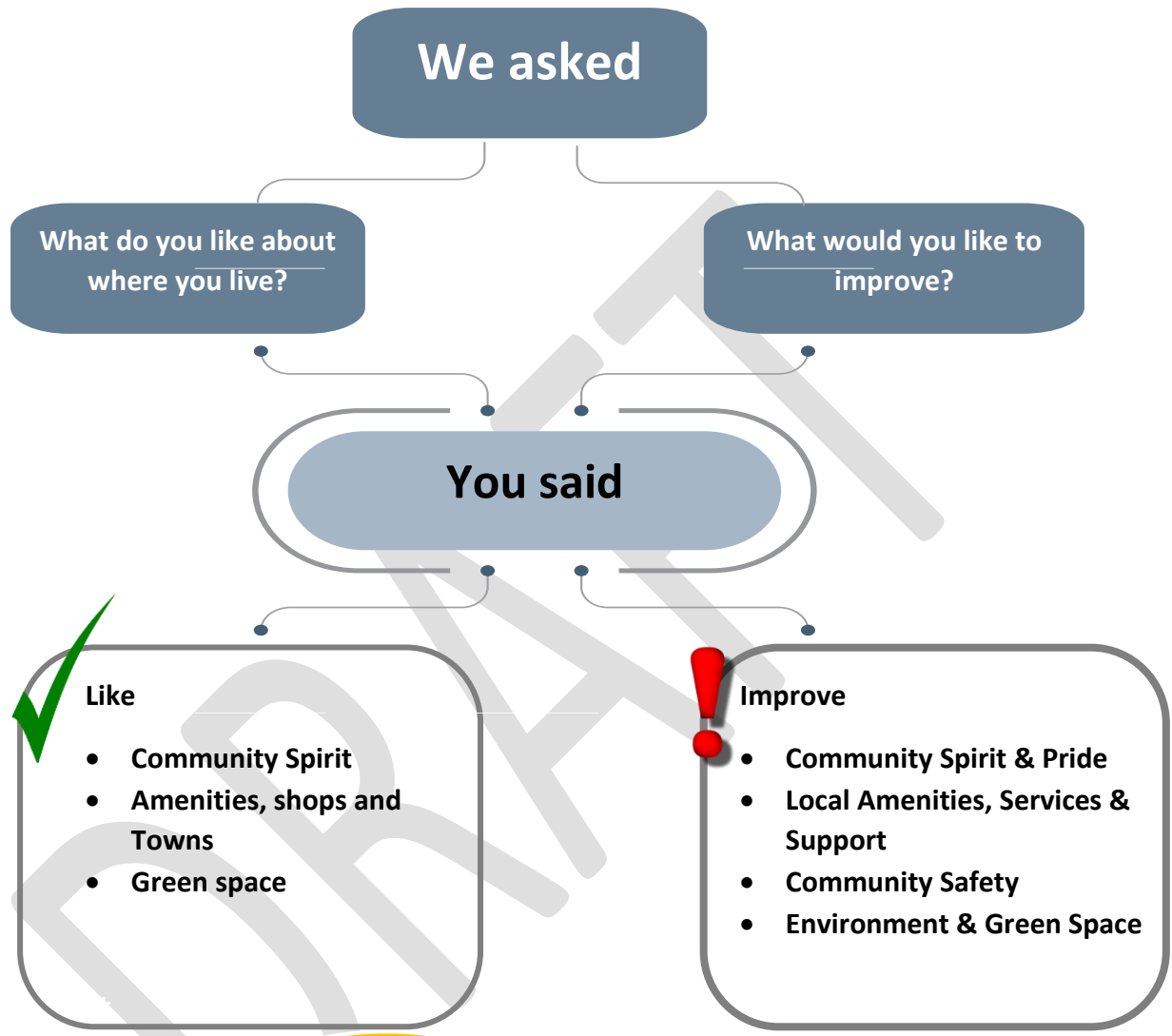
How did we engage and capture the voice of each Community?

In order to develop this plan, extensive research was undertaken with the people who live, and often work in the Central Locality. Although we have lots of data and population breakdown information about the different communities, there is no replacement for getting the views directly of people who know the area best – those who live there. To understand what people 'like' about their community and what they would like to see 'improve' in each community, we used various engagement methods and channels of communication to gather information to inform this plan. These include;



What do residents think of the Central Locality?

WE ASKED, YOU SAID ...



Hexthorpe

Overview

Hexthorpe is a suburb of Doncaster, and borders Balby and Doncaster Town Centre. It is separated by railway lines and the river Don from the villages of Sprotbrough and Newton. It has a multi-cultural community and has great community groups.

Hexthorpe has a well-attended Primary School. There are two industrial estates in Hexthorpe: one at Cherry Tree Road, and the other at Hexthorpe Trading Park.

Hexthorpe has a large park called Hexthorpe Flatts. The area is popular with families from the surrounding area. One popular attraction within Hexthorpe Flatts is the Dell, a bandstand set in what was a small quarry.

This ward has the following plans: Hexthorpe Strategic Plan, Hexthorpe Community Plan.

Key facts on this page have been taken from the Hexthorpe & Balby North ward data. At the request of residents, elected members and stakeholders, the voice is from Hexthorpe only

Key facts about your community

All age Population
of **13,788**

Healthy Life
Expectancy- (in % avg.)

Males: 76

Females: 79.9

60% of

Hexthorpe are in
England's most
deprived 10%

Crime Rate

189 per 1000

population

ASB Crime Rate

37 per 1000

population

23%

Of households in
fuel poverty

13%

Of working age
population
claiming Universal
Credit (Oct 21)

All domestic Abuse crime
for year up to Nov 2021-

29 per 1000

population

What you said you liked



Green Space,

Walking routes, Parks, Hexthorpe Flatts



Local assets,

Churches, Hexthorpe Park Café, The Junction.



Community Spirit,

Good community spirit & vibe, tight knit community

What you would like to improve



Green Space & Environment Issues,

Upgraded equipment in parks, poor housing conditions & littering



Community Safety,

Crime, ASB, community cohesion, drugs and feeling / perception of safety, police visibility



Local Activities and Support,

Access to support & support for black and minority ethnic communities



Community Spirit & Pride, more

Community activities & events, publicise what's going on.

"Multi-cultural,
1001 days and
Family Hub help"

"Community spirit and good
community events through
Kings Cross Church."

"Close knit community;
everyone knows each other
good neighbours"

"I like the Dell Café in
Hexthorpe..."

"Priorities are safety in the park,
community conflict, rubbish and crowds
of people"

"Huge issue with fly
tipping, and general litter
in back alleys and streets"



Balby

Overview

Balby is a suburb of Doncaster located to the south-west of the borough. Balby is within the Doncaster Central constituency. In the early 20th century, St Catherine's Hospital was built in the south of Balby, near to the site of St Catherine's Well, an ancient site of healing and pilgrimage.

Balby is home to the Carr Lodge Nature Reserve, a low-lying grassland; it is flooded in winter but dries out in summer and is used by local birdwatchers. The external scenes for the BBC comedy *Open All Hours* were set and filmed on Lister Avenue, Balby. The shop, which served as Arkwright's grocery store, was, and still is, a hairdresser. It was converted for the duration of filming.

Economic activity is still centred on heavy industry, especially around the Carr Hill Industrial Estate, home to Bridon-Bekaert Rope manufacturer and Pegler's Brass Foundry.

This ward has the following plans: Balby Community Plan

Key facts on this page have been taken from the Balby South ward data. At the request of residents, elected members and stakeholders, the voice is from the Balby as a whole.

Key facts about your community

All age Population

of **9,738**

Healthy Life Expectancy- (in % avg.)

Males: 77.1

Females: 82.2

27% of

Balby are in England's most deprived 10%

Crime Rate

150 per 1000

population

ASB Crime Rate

16 per 1000

population

20%

Of households in fuel poverty

7% Of working

age population claiming Universal Credit (Oct 21)

All domestic Abuse crime for year up to Nov 2021-

24 per 1000

population

What you said you liked



Community Spirit & Pride,

Friends & Family, Community events, the people



Community Assets,

Shops, greenspace, walking routes.



Good Access, Transport,

Links to the Town centre.

What you would like to improve



Community Spirit & Pride, more activities for those isolated and young people.



Local Activities & Amenities, promote and publicise local services & what's on.



Community Safety, Crime, ASB, improve perception/ feeling of safety, road safety, speeding.



Environment & Green Space, develop, clean and maintain parks and greenspace.

"Good transport and easy to get to places. Could do with more"

"Social isolation is a priority, particularly amongst the older population"

"There used to be more Youth Clubs in the area which was great for kids and teenagers"

"Library's provide a safe space for people"

"In the past there was less ASB, no rubbish around the streets and less drug dealing"

"Well connected walking routes, easy to get to from place to place, good to go walking with the dog and other walkers are friendly"

"Good transport and easy to get to places, Could do with more cycle paths/parks"



Wheatley Hills & Intake

Overview

Wheatley Hills & Intake ward is made up of four villages; Wheatley Hills, Wheatley Park, Clay Lane and Intake.

Situated around two miles northeast of the Town Centre. The Wheatley Hills & Intake ward has a population of 18,402.

Doncaster Royal infirmary is located in the area, close to Wheatley Hills. The area has a range of parks and green spaces, which include Town Fields, a large area of public land based on Town Moor Avenue, Grove Park near the Hospital, Sandall Park and Sandall Beat Woods.

It also houses Wheatley Golf Club, Castle Park Rugby Stadium and is close to Doncaster Racecourse.

Clay Lane lies close to Sandall Park, Shaw Lane industrial park and the Wheatley Hall Road shopping outlet.

This ward has the following plans: Community Plan

Key facts about your community

All age Population
of **18,402**

Healthy Life
Expectancy- (in % avg.)
Males: 77.8
Females: 81.7

23% of
Wheatley Hills &
Intake are in
England's most
deprived 10%

Crime Rate
151 per 1000
population

12%
Of households in fuel
poverty

ASB Crime Rate
24 per 1000
population

4%
Of working age
population claiming
Universal Credit
(Oct 21)

All domestic Abuse crime
for year up to Nov 2021-
25 per 1000
population

What you said you liked



Community Spirit, well connected, family friends & Neighbours. Community groups



Local Amenities, Green Space, Plenty of parks, local shops



Good Access, Transport, Close to Town Centre shopping with good transport options car, bus, cycle, walk

What you would like to improve



Community Safety, Crime, ASB, drugs improve perception/ feeling of safety, road safety, speeding, prostitution



Environment & Green Space. Aesthetics of the area, maintenance, weeding updates to parks, lighting, pavements



Community Spirit & Pride, more activities for families and older people, more for young people



Local Amenities, Support and Services, Promote and publicise local services & events happening in the area

"Shops are good and convenient, good links to the centre"

"The amount of Crime and ASB in Wheatley worries me; more Police presence may help this"

"Keep updated with community things through Facebook groups"

"Intake shops are great and I love to spend time at Sandringham Café..."

"Intake Library is a great community"

"Lots of speeding, Beckett road ..."

Bessacarr & Cantley

Overview

Bessacarr & Cantley ward lies to the southeast edge of Doncaster and is made up of 3 areas. Cantley, Bessacarr and Lakeside. It has a population of 15,161.

The Dome leisure facility can be found in the Ward. It is also close to Doncaster Racecourse, home of the famous St Leger Festival.

Cantley has a large park and areas of woodland, and great access to shops and services, as well as, good transport links into Doncaster. It has two large landmarks in the form of two water towers. These can be seen from almost all high ground around the Doncaster district.

Doncaster Lakeside is a recreational area, housing estate and shopping complex, this area has a shared boundary with the Town Ward. It is centred on a lake, around two miles south-east of Doncaster town centre.

In recent years, it has been expanded and modernised, making the area popular with visitors and various events are held in the area throughout the year.

Key facts about your community

All age Population
of **15,161**

Healthy Life
Expectancy- (in % avg.)

Males: 81
Females: 84.5

8% of
Bessacarr ward are
in England's most
deprived 10%

Crime Rate
62 per 1000
population

12%
Of households in
fuel poverty

ASB Crime Rate
13 per 1000
population

4%
Of working age
population
claiming Universal
Credit (Oct 21)

All domestic Abuse crime
for year up to Nov 2021-
13 per 1000
population

What you said you liked



Local Amenities & Greenspace, Cantley Park, Wildlife Park, local shopping precincts, green areas, walking & cycle routes



Community Spirit & Pride, good community groups, newsletter, St Francis Church, local community centre



Good Transport Links, close to Town Centre, cost of public transport can be expensive

What you would like to improve



Local Amenities, Services & Support, Improve access to health care and improve schools. Raise awareness of support & financial support for low-income households, support & advice for small businesses



Environment & Green Space, Protect green space, more equipment and activities in parks



Community Spirit & Pride, Social isolation, activities to help elderly population, more for young people



Community Safety, Crime, ASB, drugs improve perception/ feeling of safety. Road safety, speeding, Police visibility

"Less crime, be able to feel safe on the streets, more police needed"

"There are vulnerable people in this area – they need help and need to be made aware of what help is out there"

"Regular bus service –but fares are high"

"Green space and protecting wildlife is very important to us"

"The shops on Nostell Place are ideal—we have everything we need"

"People don't always know what services are available"



Town Ward

Overview

Town Ward is made up of six areas, Town Centre, Lower Wheatley, Hyde Park, Bennetthorpe, Belle Vue, Town Moor and part of Lakeside, with a population of 23,566. Town ward is home to many historic listed buildings including the Mansion House, and Doncaster Minster. Doncaster College 'The Hub' is located on the waterfront next to the canal. The area surrounding the Town Centre, Netherhall Road area, has a multi-cultural community with many shops and eateries selling produce from a wide range of countries.

The areas surrounding the Town Centre have great access to assets such as, the Wool Market, a large variety of shops including the Frenchgate shopping centre and many of the Towns great entertainment destinations, The Danum Gallery, Library and Museum, Cast Theatre and the New Savoy Cinema.

The ward has great transport links with the newly transformed Train Station, Bus Interchange and is very close to the main motorway network. There is great access to green space and parks with Elmfield Park being a short walk from the Town Centre, with amenities such as tennis courts and a Bowling Green. It also has Town Fields, which is one of the largest outdoor spaces in the Borough and is popular with walkers and sports fans.

Key facts about your community

All age Population
of **23,566**

Healthy Life
Expectancy- (in % avg.)
Males: 74.9
Females: 80.2

50% of

Town ward are in
England's most
deprived 10%

Crime Rate
296 per 1000
population

22%

Of households in
fuel poverty

ASB Crime Rate
48 per 1000
population

10%

Of working age
population
claiming Universal
Credit (Oct 21)

All domestic Abuse crime
for year up to Nov 2021-
32 per 1000
population

Information below contains insight from Town ward excluding Town Centre.

What you said you liked



Local Amenities & Green Space. Range of shops, local markets, hospitality culture/heritage, parks



Transport Links, Train station & Interchange, good access



Community Spirit & Pride, Good community spirit, diverse community and spread of community groups, Family & Friends close by



Business Support & Ongoing Investment, Business forums, support for businesses throughout pandemic. Ongoing Town Centre improvement

What you would like to improve



Community Safety, Crime, ASB, Road safety, reduce litter, increase in Police visibility



Environment & Green Space, Improved housing standards



Amenities, Services & Support, improved activities for young people, families & older people. Reduce social isolation in older people, Raise awareness of mental health & wellbeing support, financial & debt support, substance abuse awareness & support services



Community Spirit & Pride, community messaging, better coordination of activity/events, publicise what's going on

"There are issues with drugs, speeding, parking, noise, ASB & Violence"

"The 'Next door' app is very helpful for staying connected!"

"I play football in Hyde Park with my mates every week,"

"The area use to be cleaner ...now the litter is a problem"

"There are fantastic multi-ethnic shops around Netherhall Road"

Town Centre

Overview

The Town Centre is part of the Town Ward which is made up of six areas; Town Centre, Lower Wheatley, Hyde Park, Bennetthorpe, Belle Vue, Town Moor and part of Lakeside. The Town Centre is defined within the boundaries of St James Street, encompassing St Georges Bridge & the College area, and runs behind the Market to the East and the Train Station to the West.

It is home to historic listed buildings including the Mansion House and Doncaster Minster. The famous Wool Market is a vibrant and bustling destination with international eateries. A medieval well was discovered there during renovation and has now been preserved under a glass floor. The Danum Gallery, Library and Museum is built around the frontage of Doncaster High School for Girls. The state of the art venue houses new libraries, a Rail Heritage Centre, two Museums and an Art Gallery. The new Cast Theatre and Savoy cinema complex showcase further development in Doncaster's Civic and Cultural Quarter. Doncaster College 'The Hub' and the UTC provide state of the art education facilities. The Frenchgate shopping centre provides an extensive range of retail and food outlets to cater for all ages. The Town Centre also provides access to excellent transport links with the newly transformed Train Station being at its heart and it is close to the main motorway networks.

The ward has the following plans: Master Plan and Town Deal.

Key facts about your community

All age Population
of **23,566**

Healthy Life
Expectancy- (in % avg.)
Males: 74.9
Females: 80.2

50% of
Town ward are in
England's most
deprived 10%

Crime Rate
296 per 1000
population

22%
Of households in
fuel poverty

ASB Crime Rate
48 per 1000
population

10%
Of working age
population
claiming Universal
Credit (Oct 21)

All domestic Abuse crime
for year up to Nov 2021-
32 per 1000
population

Information below contains insight from Town Centre excluding Town ward.

What you said you liked



Local Amenities & Green Space. Range of shops, local markets, hospitality culture/heritage, parks



Transport Links, Train Station & Interchange, good access



Community Spirit & Pride, Good community spirit, diverse community and spread of community groups, Family & Friends close by



Business Support & Ongoing Investment. Business forums, support for businesses throughout pandemic. Ongoing Town Centre improvement

What you would like to improve



Community Safety, Crime, ASB, drugs use improve perception/ feeling of safety. Homelessness, begging, street drinking. Retail theft, violence. Reduce litter



Environment & Green Space. Cleanliness of Town Centre



Amenities Support & Services, improved youth provision, activities for all ages, raise awareness of drug related harms & support services



Economic Recovery & Restart Support for existing businesses, attract new investment



Communications, establish group to develop plan & activity. Community messaging, better promotion of 'what's going on', more events and galas



Community Spirit & Pride, better use of business VCFS & Community groups to promote community spirit & pride

"The area used to be cleaner and I was proud of where I lived; now the litter is a problem"

"Gatherings of youths in the Town Centre, the Interchange and Frenchgate Centre that needs addressing"

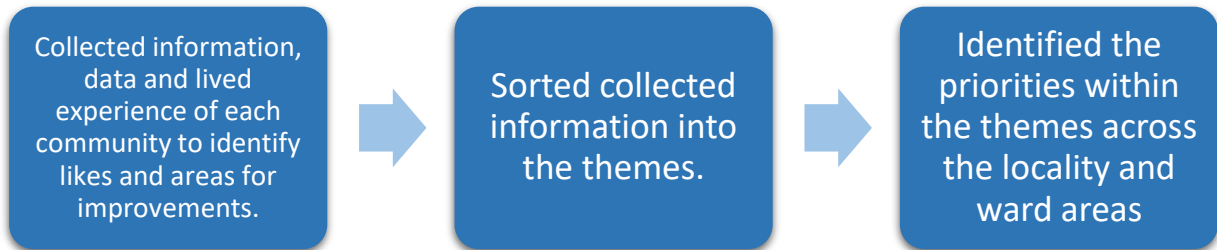
"Feel safe and good support around – Church foodbank"

"Lots to entertain the kids, Cast, Library "

"Great access to other Cities from the train station"



What we did with what you said?



We talked to a range of partners including the Police, Health, Complex Lives, Aspire, Project 6, Social Isolation Alliance, Age UK, Voluntary Action Doncaster, Local Businesses, Public Health and a range of services from across the Council to confirm what strategies and plans were already in place linked to the Themes and Priorities. A sample of these included...

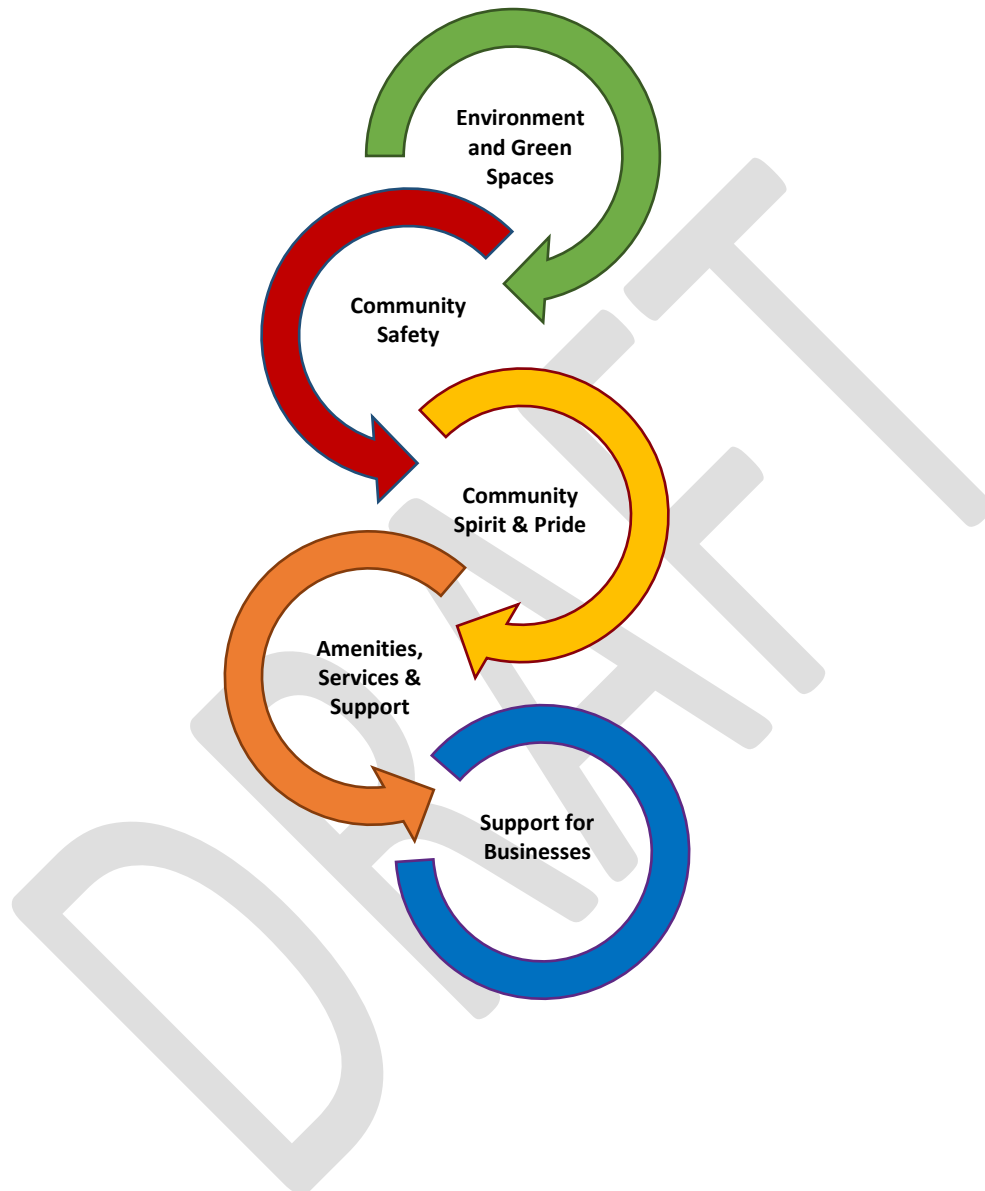


We will make sure we link the actions and activity from existing Strategies and Plans to build on the assets and strengths in our communities and address any gaps through...



So what are the Central area priorities?

At the beginning of this plan, we stated we would define the priorities for improving the area over the next year. We have outlined how we have analysed the information and have identified the following priorities for the Central Locality:



On the following pages, we have illustrated further details of what actions will support improvement for each priority theme and how this will build on and link to existing strategies, plans and activity.

**The plans and strategies detailed in the coming pages are examples of how we are currently working to support these priority areas and are not meant to represent a complete list. Extracts need to be considered in the context of the whole plan or strategy document.*

Supporting Plans & Strategies

Environment & Sustainability Strategy

Protect, maintain and enhance our natural areas, and access to and within them

Use the Future Parks Programme to develop, implement and share best practice

Support the continued development of the Doncaster Green Space Network

Effective and accessible communication and engagement to discourage fly tipping and littering

Robust and fair enforcement activity in response to fly tipping and littering

Provide advice and guidance on energy saving measures to residents, landlords, schools, businesses, community groups

Housing Strategy

Work more proactively with private rented sector landlords and tenants to engage, educate and enforce when needed

Develop information, advice and guidance to support people to take action to make their own homes more energy efficient and affordable to heat

Maintain the decency standards of all Council homes

Get Doncaster Moving Strategy

Make improvements to parks and open spaces; developing safe and attractive places to play in community settings

Promote the development and use of parks for physical activity and sport

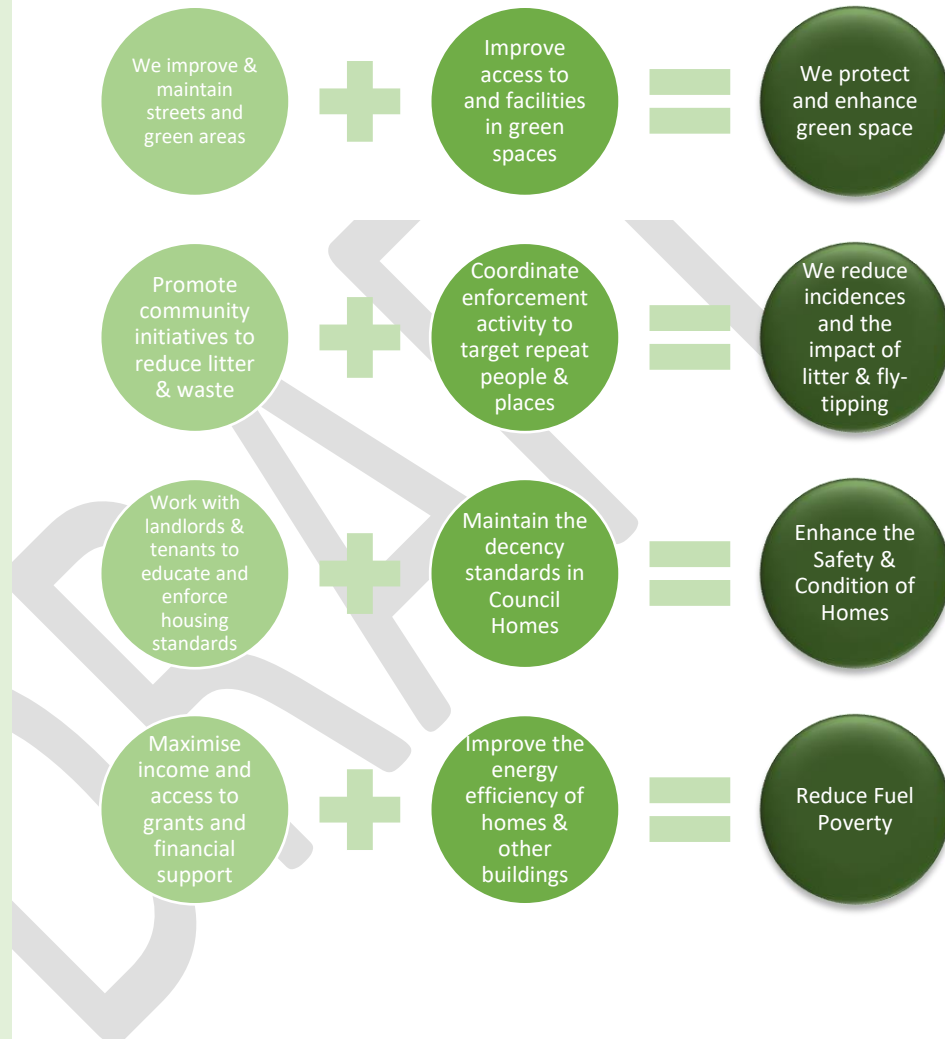
Doncaster Local Plan: Sustainability appraisal

Protect, increase and enhance the natural environment

You asked us to improve the Environment & Green Spaces

Through effective **coordination**, **continuous engagement**, **collaboration** and **communication** we will **work together to build on the local strengths and assets** across the Central locality to:

So that ...



Supporting Plans & Strategies

Doncaster Community Safety Strategy

Effectively manage ASB through proactive and responsive approaches, supported by improved mechanisms to report and respond to incidents

Tackle illegal off-road bikes & quads through a partnership approach, utilising all available Tools and Powers

Reduce the rates of Serious Acquisitive Crime across the Borough through targeted interventions in high crime areas

Reduce the number of children, young people and families affected by drug and/or alcohol misuse

Tackle the issue of street homelessness and begging through joint locality working, recognising this is an issue affecting many areas of the Borough

Children & Young Peoples Plan

Work with the Safer Stronger Doncaster partners to reduce ASB in and around Doncaster.

Tackle drugs and reduce ASB and the root causes

Homeless & Rough Sleeping Strategy

Deliver a 'Whole System' wide plan for Homelessness Prevention

Effective joined up care and support services for those most in need

Health & Wellbeing Strategy

Reducing alcohol-related harm requires a focus on prevention and early intervention alongside conventional treatment

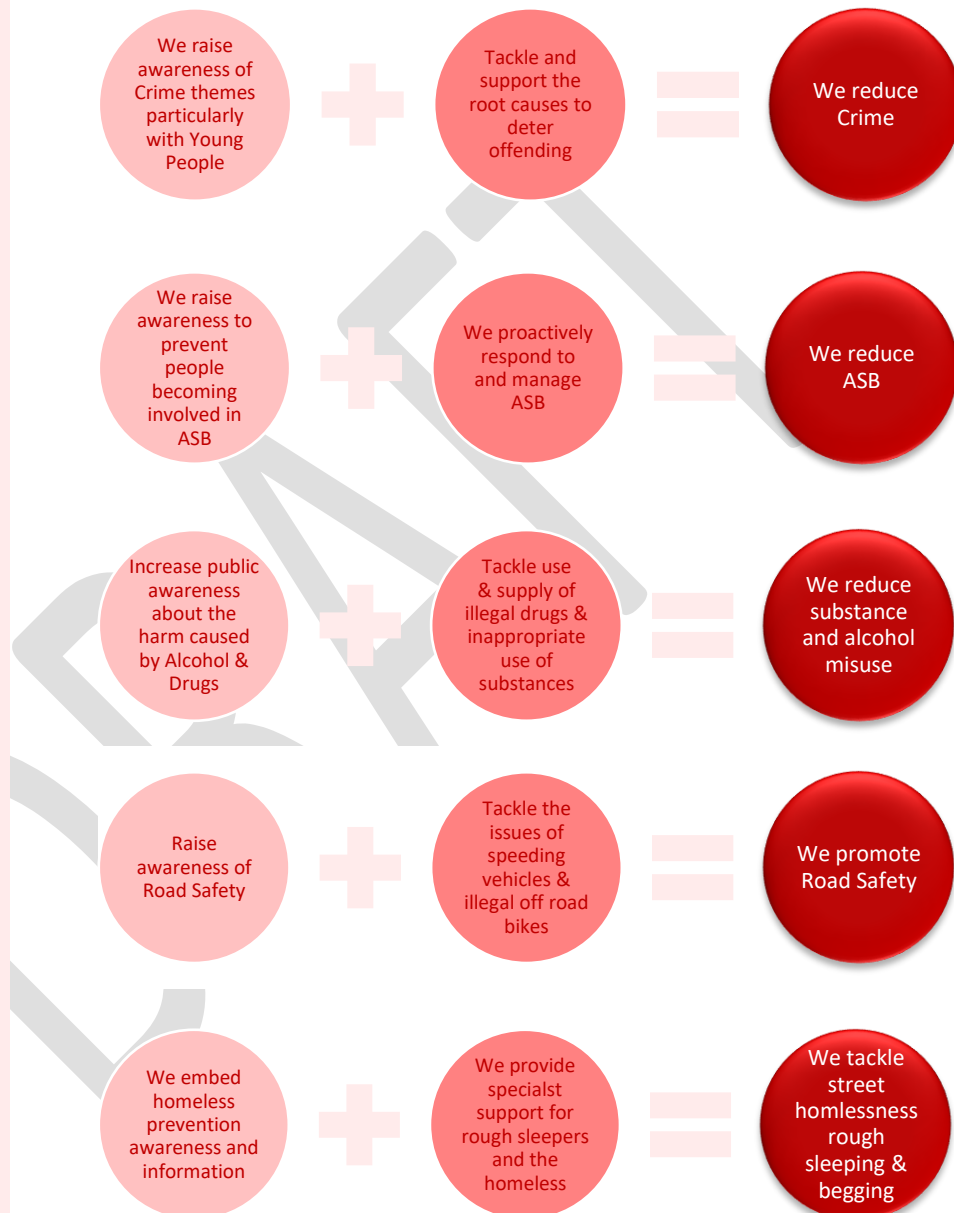
Doncaster Get Moving - Walking Strategy

Work with SY Safer Roads Partnership to ensure Road Safety Training is offered to all primary schools in the Borough

You asked us to improve Crime and Community Safety

Through effective **coordination**, **continuous engagement**, **collaboration** and **communication** we will **work together to build on the local strengths and assets** across the Central locality to

So that ...



Supporting Plans & Strategies

Cultural Strategy

To raise the profile of Doncaster through creativity & culture

Encourage people from all communities across Doncaster to access and take part in great creative and cultural activities

All children, young people, and their families participate in and enjoy great cultural experiences across Doncaster

Develop stronger marketing activities to promote culture in Doncaster to residents

Children & Young Peoples Plan

Plan community and celebratory events for C&YP to participate and engage in

DN Offer

Having accessible information in the form of a 'What's on' across the borough for children and young people

Get Doncaster Moving Strategy

Organise a range of promotional events and opportunities relating to individual "casual" participation in sport such as running, cycling, swimming and going to the gym

Doncaster Local Plan

Reinforce and support community identity and pride

Health & Wellbeing Strategy

Make greater use of campaigns to raise public awareness and influence peoples' attitudes to alcohol, and work with business to help foster an ethos of responsibility

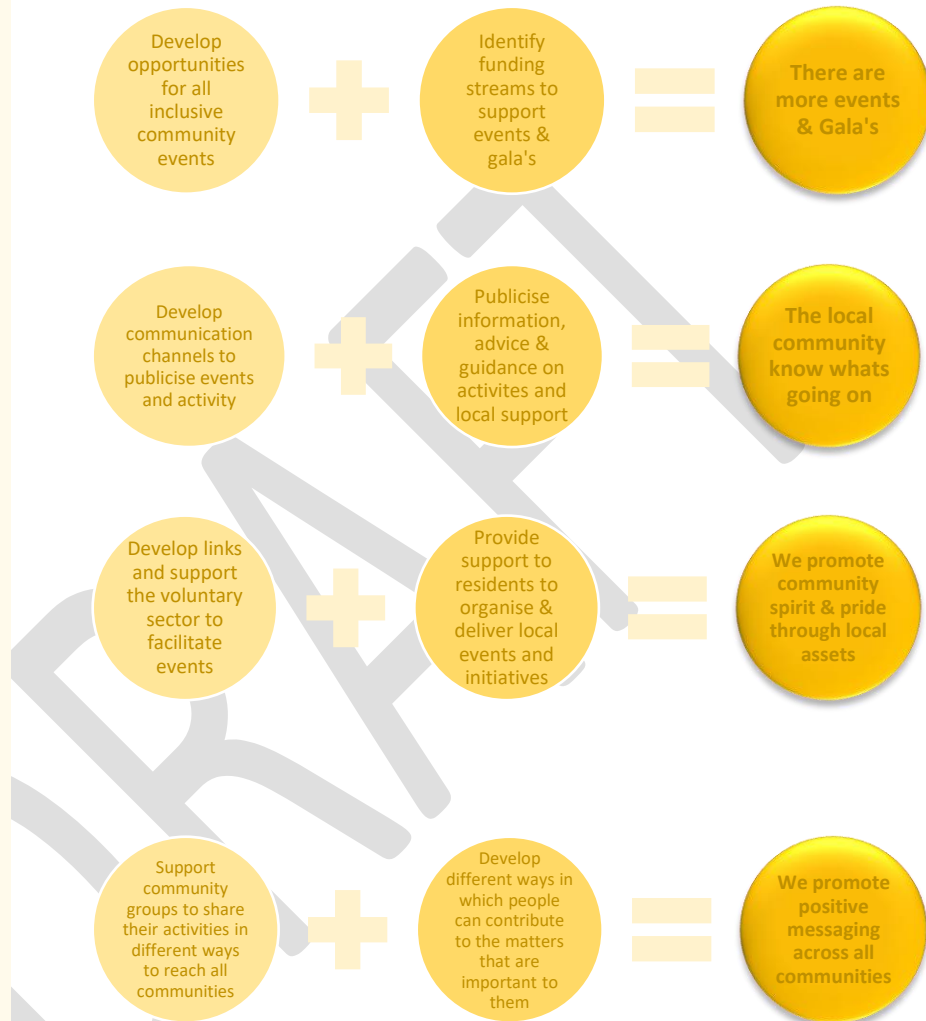
Communication and awareness raising to all groups

Using social media to reach those individuals and groups who do not engage with services

You asked us to improve Community Spirit & Pride

Through effective **coordination**, **continuous engagement**, **collaboration** and **communication** we will **work together to build on local strengths and assets** across the Central locality to

So that...



Supporting Plans & Strategies

Health & Wellbeing Plan

Clearly signposting what is available and connectivity to services internally & externally

Improved public, community and workforce awareness and understanding of dementia.

Children & Young Peoples Plan

Deliver an early intervention and prevention service for all children, YP and families

To make sure every child and YP is aware and has access to local immediate quality MH and Wellbeing support

Domestic Abuse Strategy

Prevent and ultimately end domestic abuse

Doncaster Local Plan: Sustainability Appraisal

Improve accessibility to place and services, both within and outside of the Borough

Reduce social exclusion and disadvantage

All Age Learning, Disability & Autism Strategy

Be supported to access universal and early support services, where their needs are understood, they are accepted for who they are and reasonable adjustments are made

Team Doncaster - Equality, Diversity & Inclusion Statement

Appreciate the diverse needs of people to make our information, services and products more accessible & inclusive

Doncaster Place Plan

Develop communities to enable people to access support, information, advice and guidance through local solutions

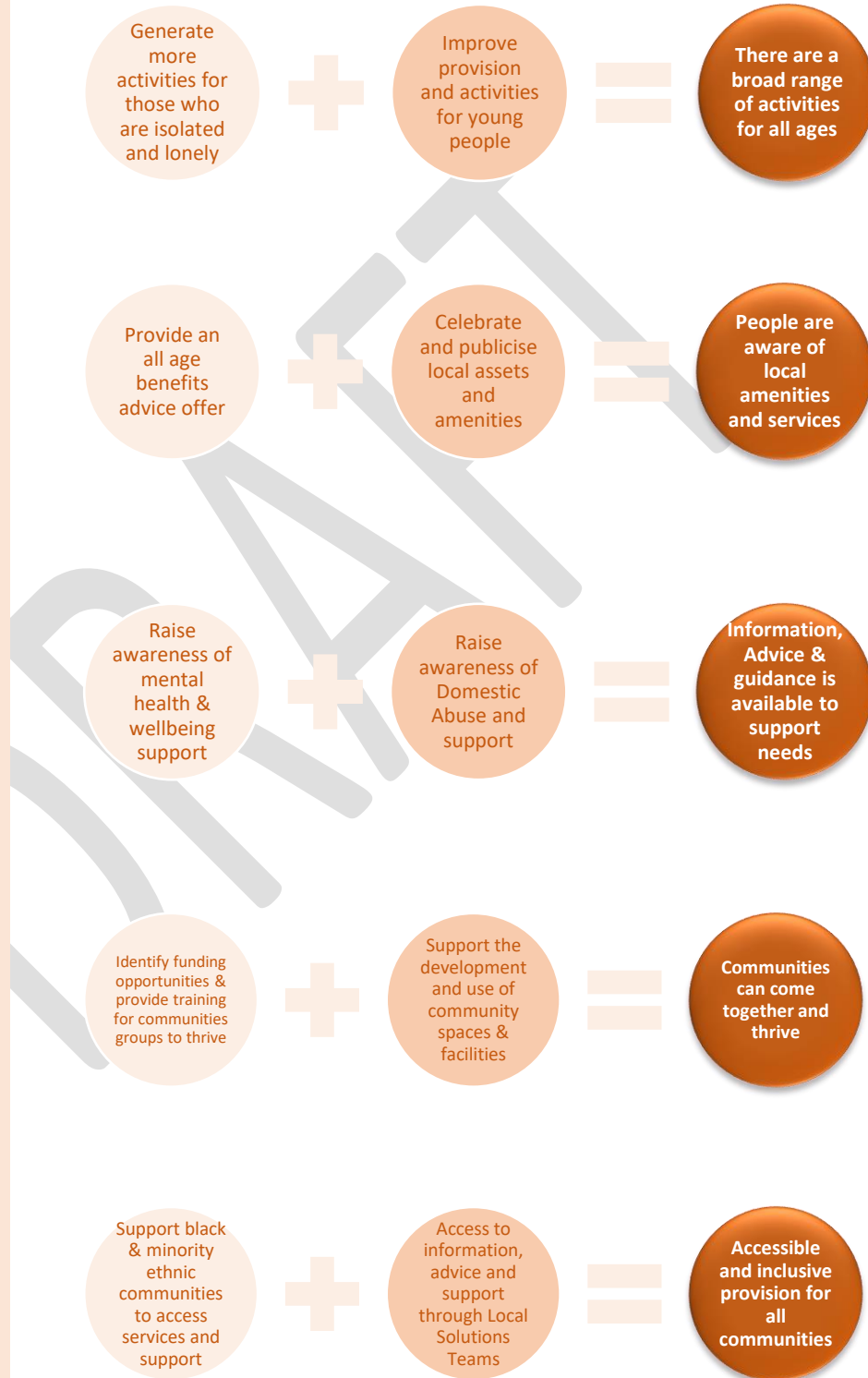
Education & Skills Strategy

Equitable and inclusive lifelong learning that empowers people to fulfil their potential and thrive in life and work

You asked us to improve the Amenities, Services & Support

Through effective **coordination**, **continuous engagement**, **collaboration** and **communication** we will **work together to build on local strengths and assets** across the Central locality to

So that ...



Supporting Plans & Strategies

Economic Recovery Plan

Encourage and develop the use of test trading areas for start-up businesses and diversification for existing businesses

Expand the provision of online and physical workshops for retailers and hospitality businesses

Town Centre Tool Kit for businesses who request support or have ideas to make Town Centre improvements

Environment & Sustainability Strategy

Maximise the energy efficiency of new and existing homes and buildings

Promote and support access to energy saving grants/loans for households and businesses

Develop innovative ways of working with local businesses to reduce the amount of take-away litter and encourage businesses to take ownership of localised issues caused by their packaging

Maximise involvement in local initiatives e.g. Big British Spring Clean and Love Where You Live

Doncaster Local Plan

Maintain and increase Doncaster's growth/prosperity and diversify its economic base

Create new jobs and new businesses

Promote and increase tourism

Town Deal

Driving private sector investment and ensuring Towns have the space to support skills and small business development

Town Centre Masterplan

Ensuring the centre is a focus for business and enterprise

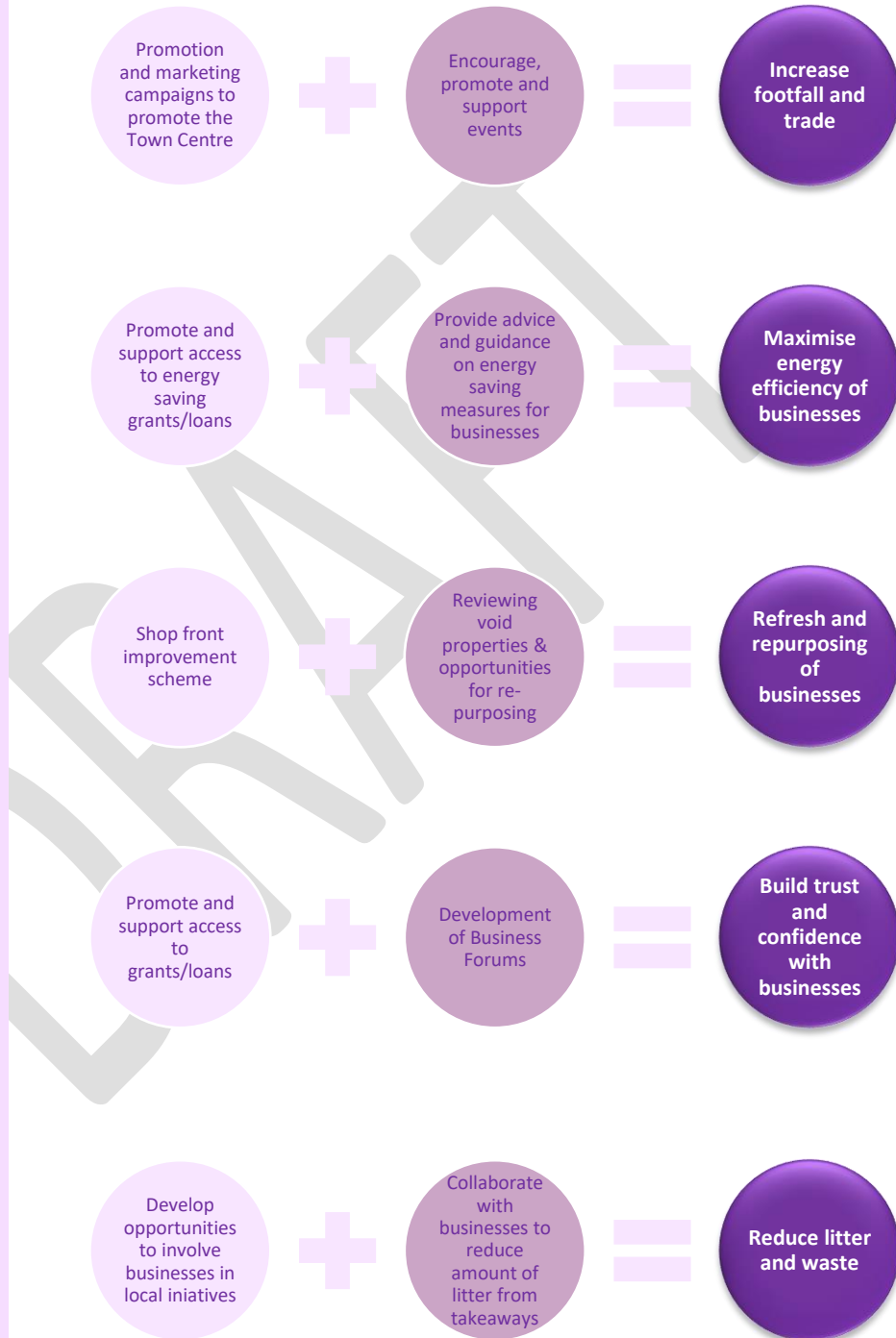
Inclusive Growth Strategy

Maximise investment into the Borough

You asked us to support local businesses

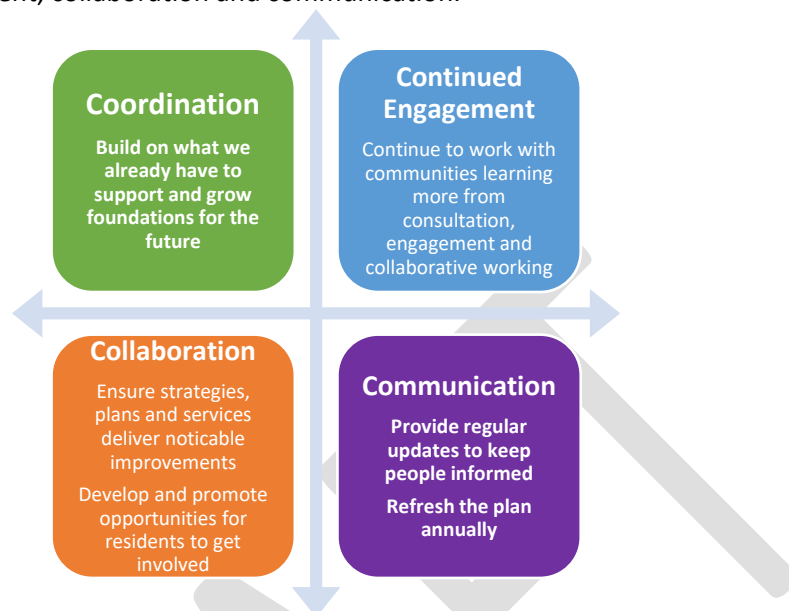
Through effective **coordination**, **continuous engagement**, **collaboration** and **communication** we will **work together to build on local strengths and assets** across the Central locality to

So that ...



What's next for the Locality Plan?

Over the next 12 months we will endeavour to build on the local assets and strengths in our communities to deliver this plan. We will seek to achieve this through effective coordination, continued engagement, collaboration and communication.



Engaging with local groups and networks is a continuous part of working together well in localities. As someone who wants to see the Central Locality flourish, you are encouraged to get involved in the plans activities and share the planned actions with as many people as possible.

What changes will I see?

In addition to the priorities identified in the plan, Team Doncaster are also changing the way we work in order to ensure support is being provided at a local level. There are a number of these changes that will happen imminently. These include:

- Relevant teams will no longer be based centrally at the Doncaster Council Civic Office but will instead have an office base within the Central locality. This will mean that our officers are embedded into the community and more easily accessible to residents.
- We will be opening Your Community Hubs at a number of locations across the Central Locality, these will provide a drop-in opportunity for people needing support
- Your Life Doncaster website will now feature a dedicated information page for the Central locality (www.yourlifedoncaster.co.uk/east). On this page you will be able to find out important information about your area such as what's on, local community groups, local contact details and news and information about how the plan is progressing
- There will be more Well Doncaster Officers in your community. Our Well Doncaster Officers have been placed in communities to support the delivery of grassroots projects that will have a lasting impact on people's lives. They are there to support the strengthening of our communities and improve the health and wellbeing of residents in Doncaster, and as part of this plan, we are doubling the amount of Well Doncaster Officers in each area to continue the positive work they are already doing.

How can you get involved?

We need everybody from Council workers to Voluntary Groups and residents themselves to get involved with developing and delivering the plan. If you want to support us to help the Central Locality thrive then we would love to hear from you.

'Shape the future of your Central Community'

Contact us at

YourVoice@doncaster.gov.uk

Useful websites for more information:

www.teamdoncaster.org.uk

www.yourlifedoncaster.co.uk

www.voluntaryactiondoncaster.org.uk